

2015: Forced Displacement Hits a Record High

Conflict and persecution caused global forced displacement to escalate sharply in 2015. Now at the highest level ever recorded, it represents immense human suffering around the world.

Source: UNHCR / 20 JUNE 2016

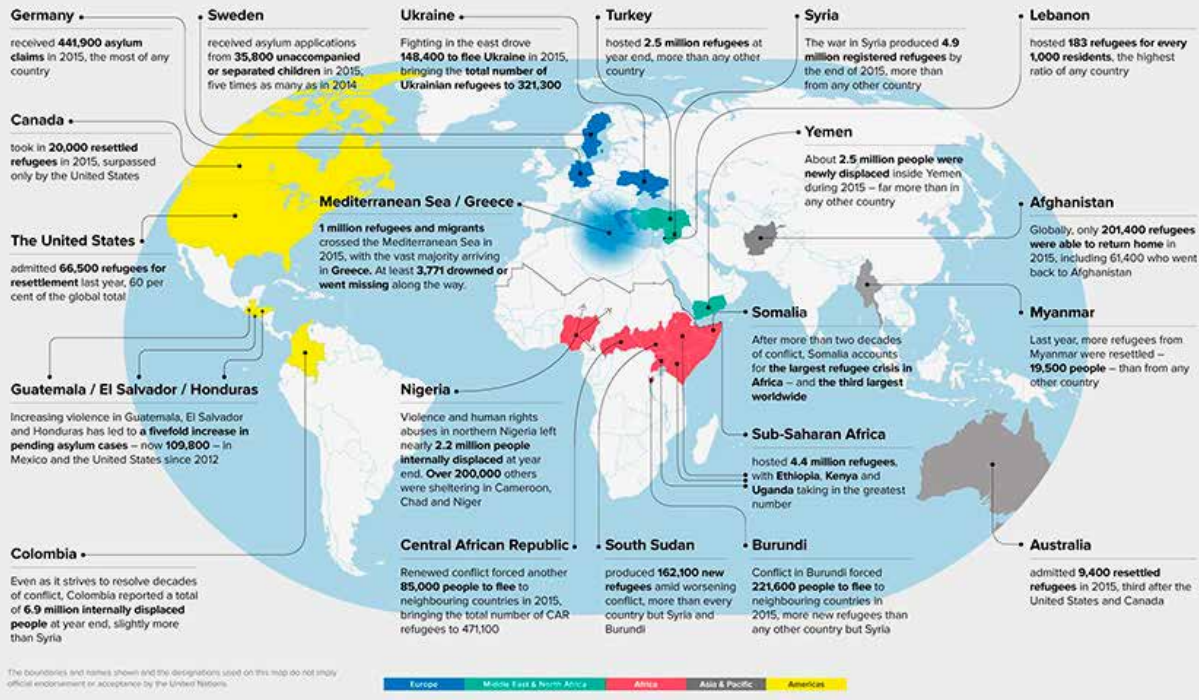


Photo: The UN Refugee Agency (UNHCR): Global trends 2015, Retrieved from: <http://www.unhcr.org/global-trends-2015.html>

References

Black, M. M., & Dewey, K. G. (2014). Promoting equity through integrated early child development and nutrition interventions. *Annals of the New York Academy of Sciences*, 1308, 1–10.

Grantham-McGregor, S. M., Fernald, Lia C H, Kagawa, Rose M C, & Walker, S. (2014). Effects of integrated child development and nutrition interventions on child development and nutritional status. *Annals of the New York Academy of Sciences*, 1308, 11–32.

Spitz, R. (1945). Hospitalism. An inquiry in the genesis of psychiatric conditions in early childhood. *Psychoanalytic Study of the Child*, 1, 53–74.

UNHCR. *Global trends: Forced displacement in 2015*. Retrieved from <http://www.unhcr.org/news/latest/2016/6/5763b65a4/global-forced-displacement-hits-record-high.html>.

United Nations Children's Fund (UNICEF). (2016). *The state of the world's children 2016: A fair chance for every child*. Retrieved from http://www.unicef.org/publications/index_91711.html.

Victora, C. G., Bahl, R., Barros, Aluísio J D, França, Giovanni V A, Horton, S., Krasevec, J., . . . Rollins, N. C. (2016). Breastfeeding in the 21st century: epidemiology, mechanisms, and lifelong effect. *The Lancet*, 387(10017),

From the Editors

By Deborah J. Weatherston, Editor, Michigan, USA,

dweatherston@mi-aimh.org

Maree Foley, Associate Editor, Switzerland/ New Zealand, maree.foley@xtra.co.nz

Hiram E. Fitzgerald, Associate Editor, Michigan, USA, fitzger9@msu.edu 475–490.

This issue of *WAIMH Perspectives in Infant Mental Health* introduces the new WAIMH President, Kai von Klitzing to the members of WAIMH and readership at large around the world. In his President's Address, "Integrating Physical and Mental Health Support for Infants Worldwide," Kai states clearly and eloquently, "Each mind lives in a body; the survival of the body without a healthy mind causes tremendous suffering. A healthy mind is essential for human development." This builds on Miri Keren's leadership during her presidency to promote the mental health of infants through WAIMH's Infants' Rights paper and the world of WAIMH in coming years.

Included in this issue is a clinical article focusing on fathers and their important relationships with infants and young children. In addition, we are very pleased to publish the work of two infant mental

health colleagues who were honored by their WAIMH Affiliates in 2015: Carolyn Dayton who composed a poem, "The Infant Mental Health Specialist Who Does Not Like Babies", upon receipt of an award for scholarly work from the Michigan Association for Infant Mental Health and Heather Warne who received the Ann Morgan Prize from the Australian Association for Infant Mental Health – Victoria for her paper, co-authored with Patricia O'Rourke, "Psychodrama and Infant Mental Health: An essay and a conversation." Both appear here with permission.

Of importance, too, are reflections from sponsored delegates in Ghana and Brazil who attended the WAIMH Conference in Prague. Nana Gaisie (Ghana), Livia Caetano da Silva Leão (Brazil) and Larissa Ramos da Silva (Brazil) express their gratitude for the support they received to come to Prague and to meet people from around the world who shared their passion for infant mental health.

As the number of Affiliate organizations grows, Maree Foley and Anna Huber have many things to report, as do the WAIMH Executive Officers in Tampere.

We deeply appreciate the contributions each person has made to the summer issue and invite those of you who have commentary or articles to submit for readers around the world.